



2025

Impact Report

WYDE

TABLE OF CONTENTS

00 MESSAGE FROM THE FOUNDERS

01 OUR VALUES AND GUIDING PRINCIPLES

02 OUR COMMITMENT

03 A YEAR IN REVIEW

04 OUR IMPACT AND OFFSET PROJECTS

05 GOALS FOR 2026

06 FINAL NOTES

Message from the founders

00

We are writing **this message** while the world is torn apart by war. By fractures that hurt even those who watch from a distance.

It is difficult to speak of impact, growth, and the future without carrying the weight of what is happening. We chose not to look away. To donate, where we could. To name, at least, what we cannot resolve.

2025 took us far: geographically, emotionally, professionally. We crossed borders, languages, cultures. And we discovered that what we seek in Italian classrooms is also sought in Mumbai, Monterey, Beijing, and Johannesburg. That the need for authentic connection has no latitude. That vulnerability, kindness, and the courage to sit with uncertainty are, now more than ever, political acts.

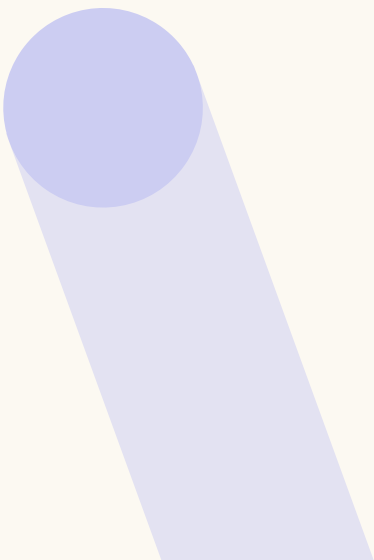
And while we looked outward, we continued to care for what is close: 4,400 bees protected somewhere in an Italian field, a morning of volunteering at a nursing home, a box of toys built together and then donated, 600 trees planted, one for every training journey we had the privilege of facilitating.

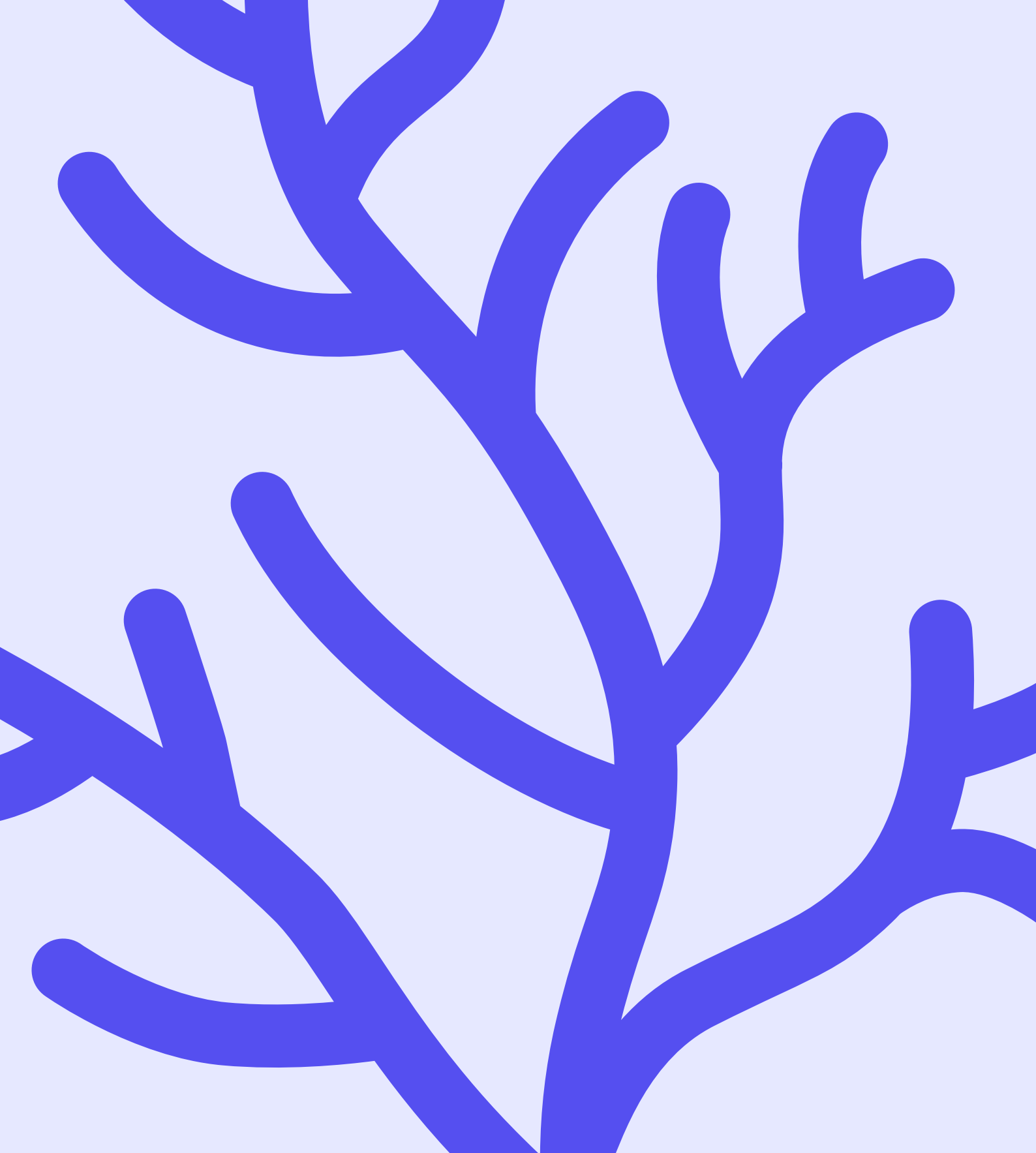
These are small, intentional, stubborn gestures. Because real impact makes no noise. It lives in the interweaving of the local and the global, between the care of the smallest gesture and the vision of broader change.

For 2026, we want to deepen this tension: to bring Wyde's work beyond borders we have not yet crossed, without losing our roots. To grow in breadth, without losing depth. To keep believing that another work culture is possible, especially, and above all, when the world around us seems to tell us otherwise.

Thank you to everyone who walks with us, in Italy and beyond.

Jlenia and Gregorio





Our values and guiding principles

01

WE TRANSLATE ATTENTION INTO ACTION

Every element is essential for creating meaningful connections between people and their emotions, ideas, goals and mutual relationships. We believe that the human bond between individuals, the values and ideas we share, can foster the growth of both people and organisations. We leave no one and nothing behind.

WE STAY OPEN TO THE UNEXPECTED

We recognise each person's contribution as a precious piece in growing a positive idea so that it may spread. Almost always, this experience will be something capable of transforming us. We foster the creation of inclusive communities in which differences are not only accepted, but valued, allowing people to connect, learn and grow together.





WE DARE, MAKING ROOM FOR MULTIPLE TENSIONS

We believe in fertile paradoxes. In every system, we seek the point of impact. It is a personal challenge to look further, to expose ourselves, to say uncomfortable things and to think outside convention. To bring about positive, meaningful change, it is essential not to stand still. In designing our learning experiences, we welcome and manage multiple tensions, even conflicting ones, as key elements that may lead to creative solutions.

WE GIVE SOUL TO IDEAS THROUGH PLAY

People find meaning in their journey through play. They realise they can imagine the future, feel freedom deeply, and observe reality without filters. In play, we discover new aspects of ourselves and others, even across different contexts. Behind every idea are questions that have a soul and hold the potential for transformation.



**Our
commitment**

02

We are part of a global movement committed every day to an **inclusive, equitable and generative paradigm**. What are we doing, and what do we want to continue doing?

01

Ensuring sustainable models of production and consumption through continuous training for all Wyde stakeholders on sustainability-related topics.

02

Promoting equal opportunity in the workplace through hiring and career advancement initiatives aimed at reducing the gender gap and unemployment across Italy.

03

Improving the personal and professional quality of life of people by promoting the fulfillment of individual needs and guaranteeing protection and wellbeing for employees and collaborators through a stimulating work environment.

04

Protecting the environment and reducing our corporate impact by activating dedicated services for collaborators and employees, enabling them to actively contribute to our goals.

05

Promoting the improvement of working conditions within organisations.

06

Fostering a culture of social, environmental and economic responsibility: we care about the wellbeing of people, the environment, and animals.

07

Supporting entrepreneurial initiatives that foster innovation for a more sustainable and impactful economy.

08

Organising workshops on the creation of sustainable businesses for communities and the environment.

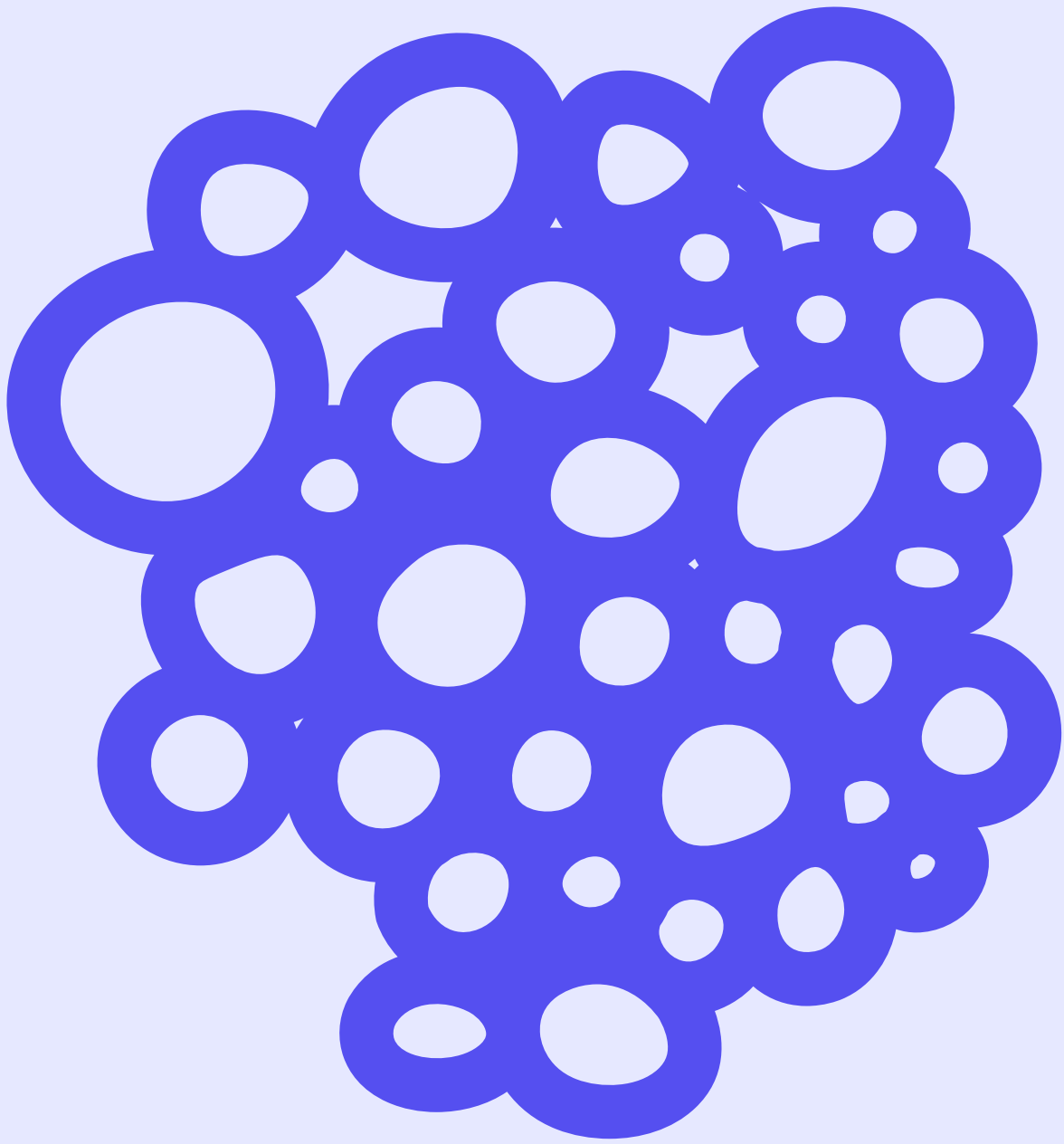
09

Carefully selecting suppliers to ensure that their services respect the principles upheld in our corporate Code of Ethics.



SUSTAINABLE DEVELOPMENT GOALS

1 NO POVERTY 	2 ZERO HUNGER 	3 GOOD HEALTH AND WELL-BEING 	4 QUALITY EDUCATION 	5 GENDER EQUALITY
6 CLEAN WATER AND SANITATION 	7 AFFORDABLE AND CLEAN ENERGY 			
8 DECENT WORK AND ECONOMIC GROWTH 	9 INDUSTRY, INNOVATION AND INFRASTRUCTURE 	10 REDUCED INEQUALITIES 	11 SUSTAINABLE CITIES AND COMMUNITIES 	12 RESPONSIBLE CONSUMPTION AND PRODUCTION
13 CLIMATE ACTION 	16 PEACE, JUSTICE AND STRONG INSTITUTIONS 	14 LIFE BELOW WATER 	15 LIFE ON LAND 	17 PARTNERSHIPS FOR THE GOALS



**A year
in review**

03

A year in review

1/2

January

- *Wyde Seeds: cultivating the faculty*
Launch of the webinar series
- *A dinner that becomes support*
Donation to Fondazione Amplifon
- *600 possible trees*
Donation to One Tree Planted,
reforestation in Portugal
- *Wyde Night: offsetting to give back*
Carbon offsetting with Up2You

February

- *An adopted hive*
3Bee – 4,400 bees protected

March

- *Wellbeing enters the workplace*
Welfare plan renewal, Happily platform

April

- *Measuring sustainability*
EcoVadis renewal, Bronze Medal

May

- *Supporting those who care*
Donation to Humanitas
- *Don't look away*
Donation to SSCh, support
for children in Gaza

A year in review

2/2

-
- *Time donated*
Volunteering at a nursing home in Luino, with Daria
 - *Kindness Lab*
Fondazione L'Aquilone – Bruzzano
 - *An adopted hive*
3Bee – 4,400 bees protected
 - *Psychological Safety in Europe*
WellbeinTeam – meeting Cipro
 - *Cleaning up the sea*
Donation to Ocean Cleanup
 - *Educating for the future*
Partnership Birex – Teknè master programme
 - *Wyde Faculty: thinking together*
Faculty Meeting with THINK
 - *A team building that becomes a gift*
Sisal – toy donation
 - *One course, one tree*
Donation to One Tree Planted for every course delivered

Cultivating knowledge, within the faculty

The growth of a professional community depends on the quality of the conversations it can activate.

With **Wyde Seeds** we launched a cycle of meetings dedicated to our internal faculty: a **continuous learning space** in which to share tools, practices and perspectives to enrich our way of working with organisations.



Each session was led by faculty members or Wyde partners, with the goal of keeping the exchange of expertise alive and nurturing **a culture of research and ongoing development.** Among the topics covered:

MENTORING & COACHING

→ Guiding people's growth

With Adriana De Pasquale we explored the value of mentoring and coaching as tools for accompanying professional development and fostering knowledge transfer within organisations.

AGILE THINKING

→ Thinking and acting in complex contexts

Piero Mancino introduced the principles of the agile mindset, an approach that helps teams face uncertainty with greater flexibility, experimentation and adaptability.

PERSONAL BRANDING

→ Building a conscious professional presence

With Doralice Bosio and Chiara Gandolfi we worked on professional identity and self-narration – increasingly central tools for those who work in training and consulting.

DESIGN BRIDGING

→ Connecting disciplines and perspectives

Giorgio Di Tullio guided a reflection on design as a practice of connection between different worlds, capable of generating new solutions from the meeting of competencies.



DESIGN THINKING

—> Designing experiences that work

With Marco Ossani we explored human-centred design methodologies, useful for creating more effective and transformative learning journeys.

LEARNING GAMIFICATION

—> Play as a lever for learning

Dora Bugatti explored the role of gamification in training processes, showing how play can activate participation, curiosity and memory.

Through **Wyde Seeds** we continue to invest in the development of our faculty, convinced that a community that learns together is also a **community capable of generating greater impact.**

Reforestation to regenerate

In January 2025 we supported **One Tree Planted** with a donation of **€600**, contributing to a reforestation project in **Portugal**.



Every tree planted represents a small act of care for the planet and for future generations. Reforestation helps capture CO₂, combat climate change, rebuild ecosystems and protect biodiversity.

This commitment is part of a broader vision: to integrate environmental sustainability into Wyde's everyday choices.

A small gesture of support

During the year we supported **the charity dinner organised by Fondazione Amplifon**, contributing to the fundraising effort for the Foundation's social projects.

For Wyde, participating in initiatives of this kind means concretely supporting organisations that work to improve the quality of life of people, especially the most fragile communities.

A simple gesture that reinforces a principle fundamental to us: generating impact also means carefully choosing where to direct our resources.



Leaving a lighter footprint

The **Wyde Night** was a gathering dedicated to our community: clients, faculty and partners came together to share ideas, experiences and visions on the future of work.



For this edition, we chose to design the event with particular attention to its environmental impact. In collaboration with Up2You, we measured the CO₂ emissions generated by the event and activated an offsetting process to balance them.

The emissions generated during Wyde Night were offset by supporting environmental projects included in the **SDG Mix package**, a set of certified international initiatives that contribute to reducing greenhouse gas emissions and protecting ecosystems.

The supported projects are:

THE ENVIRA AMAZONIA PROJECT



Protection of the Amazon rainforest in Brazil

KATINGAN PEATLAND RESTORATION AND CONSERVATION PROJECT



Protection of peatlands and tropical forests in Indonesia





BOYABAT HYDROELECTRIC POWER PLANT

Generation of renewable hydroelectric energy in Turkey

FSCECP HYDROELECTRIC POWER PLANT

Development of clean energy through hydroelectric infrastructure

The environmental benefits generated by these initiatives are certified through **carbon credits**, which verify the reduction or removal of CO₂ emissions.

We also wanted to actively involve participants in this journey. During the event, each guest received a **bracelet containing plantable seeds**, a small symbolic item designed to raise awareness about sustainability.



By scanning a QR code, participants were able to access a dedicated platform and personally choose which project to support, directly contributing to offsetting the event's emissions.

Wyde Night thus became not only a moment of gathering, but also an opportunity to reflect on how every event can be designed more responsibly, transforming participation into a concrete act of care for the planet.

A commitment that grows, hive by hive

In February 2025, we renewed our support for **3Bee**, an organization committed to protecting pollinators and regenerating ecosystems.



Through the adoption of beehives, we actively contribute to the protection of bees and the preservation of biodiversity.

Today, **Wyde safeguards hives distributed across the country, supporting a total of approximately 4,400 monitored bees**, while sustaining the work of beekeepers who care for these fragile and valuable ecosystems every day.

Bees play a fundamental role in maintaining **environmental balance**: through their pollination activity, they enable the reproduction of many plant species and contribute to the health of natural habitats.

The project also allows us to stay closely connected to the work of beekeepers through **images and regular updates from the hives**, documenting the evolution of the colonies and the life of pollinators across the seasons.



A simple gesture that, for us, represents something more: a conscious choice **to support the biodiversity** that makes life across many ecosystems possible.

Caring for people, every day

In 2025, we renewed our corporate **Welfare Plan**, reaffirming our commitment to providing the people who work at Wyde with concrete tools for support and protection

We believe that well-being is not an accessory to work, but a condition that enables people to express their full potential and build healthier, more sustainable professional relationships.

The welfare plan therefore represents an ongoing investment in the quality of life of our people, offering support both economically and personally. It is our way of strengthening a work environment that places balance, trust, and mutual care at its core.



A recognition that confirms our direction

In April, we renewed our assessment with **EcoVadis**, one of the leading international organizations evaluating companies' sustainability performance.



THE ECOVADIS ASSESSMENT CONSIDERS FOUR KEY AREAS:

Environment	01
Labor & Human Rights	02
Ethics	03
Sustainable Procurement	04

Maintaining the **Bronze Medal** confirms Wyde's position among the **top 35% of companies assessed globally**, a result that highlights performance above the average of its reference market.



For us, this recognition represents not only an achievement, but above all a **milestone within a broader journey**, one that drives us to further strengthen our social, environmental, and economic responsibility practices.

Continuing to benchmark ourselves against international standards means maintaining a strong focus on the alignment between the values we promote and the actions we take every day.



A gesture of solidarity for the children of Gaza

In May 2025, Wyde made a donation to [Support and Sustain Children Onlus](#), an organization committed to supporting children and families affected by the humanitarian crisis in the Gaza Strip.



The donation was allocated to the campaign *Help for Gaza Now*, an initiative aimed at raising funds to provide assistance and support to children involved in the conflict.

In contexts marked by instability and humanitarian emergencies, children are often the most vulnerable. With this gesture, we wanted to contribute, however modestly, to the work of organizations that strive every day to provide protection and support to the most fragile communities.

Investing in knowledge that heals

On May 30, 2025, Wyde made a donation of **€1,000 to Fondazione Humanitas per la Ricerca**, aimed at supporting research projects in the field of **neuroscience**.



This contribution supports researchers engaged in studying brain aging processes and the prevention of neurodegenerative diseases.

Supporting scientific research means investing in the future of collective health. It is a gesture that looks ahead: every research project, every study, every possible discovery represents one more step toward improving people's quality of life.

Volunteering experiences with Fondazione Amplifon

In June, the initiative developed by Wyde in collaboration with [Fondazione Amplifon](#) to promote a culture of kindness through corporate volunteering experiences comes into full swing.

The project was created with the aim of providing opportunities for employees from different companies to step outside their usual professional environments and [dedicate time and energy to initiatives with social value](#), engaging with local communities and organizations.



During the month, we facilitated volunteering activities and moments of connection in collaboration with local organizations, including a nursing home in the area and **Fondazione L'Aquilone**, guiding participants through experiences centered on relationships and active listening.

As part of this journey, we also introduced the **Kindness Lab**, an experiential workshop focused on kindness as a concrete practice: small gestures, mutual attention, and the ability to care for others become tools for building more inclusive communities.

Through these initiatives, we continue to work around a simple yet powerful idea: kindness is a behavior that can be learned and practiced together.



Values, communication, and organizational culture

In 2025, the collaboration between Wyde and [LILT \(Italian League for the Fight against Cancer\)](#) continues, a journey that combines training, strategic reflection, and pro bono support.

Throughout the year, we supported the organization with training activities focused on values and communication, with the aim of strengthening the alignment between identity, organizational culture, and the way impact is communicated.

Alongside this work, we also took part pro bono in the year-end staff meeting, delivering a session dedicated to innovation and creativity, an opportunity for dialogue designed to spark new perspectives and support the organization's ongoing development.

For Wyde, collaborating with organizations such as LILT means putting our skills and tools at the service of those who work every day for the well-being of people and the community.



European research on psychological safety in hybrid teams

Wyde's work within **WellBeInTeam** continues in 2025, a European research project developed in collaboration with the **Erasmus+** programme and an international network of partners.



The initiative was created with a clear objective: to promote psychological safety in hybrid teams within small and medium-sized enterprises, helping organizations build work environments where people can express themselves freely, share ideas, and address mistakes without fear of judgment.

Throughout the year, we continued to contribute to the development of the methodology and the testing of the tools envisaged by the project. In September, we took part in the **Transnational Project Meeting in Cyprus**, a shared working moment with all the European partners involved in the initiative.



The meeting was dedicated **to sharing the project's progress**, discussing research findings, and planning the next phases of development.

Through **WellBeInTeam**, we continue to contribute to a broader reflection on the future of work, exploring tools and practices that help organizations, particularly SMEs, create more open, collaborative, and psychologically safe working environments.

Contributing to freeing the oceans from plastic

Throughout the year, Wyde chose to support [The Ocean Cleanup](#), an international organization committed to developing innovative technologies to remove plastic from the world's oceans and major rivers.



Through a donation of €500, we contributed to the organization's mission: to develop and scale technological solutions capable of intercepting and removing plastic waste before it disperses into marine ecosystems.

Protecting the oceans is one of the most urgent environmental challenges of our time. With this gesture, we aim to support initiatives that actively work to safeguard marine biodiversity and reduce the global impact of plastic pollution.

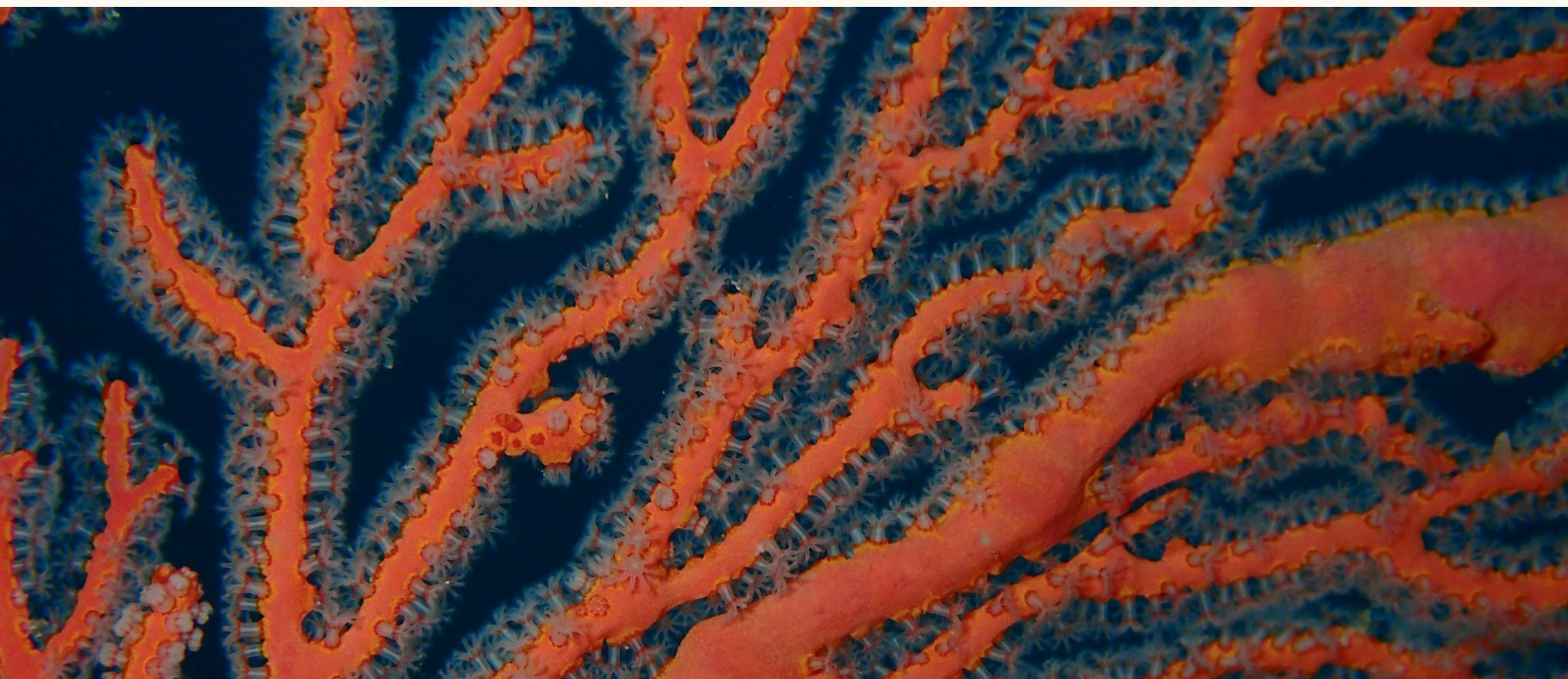
Building skills for the digital transition

In 2025, Wyde launched a **partnership with BI-REX**, the national Competence Center specializing in Industry 4.0 and 5.0 technologies.

Within the Executive Master Teknè 5.0® on Digital Transformation, Wyde participates as a training partner, contributing to the module dedicated to Leadership & Change Management.

The Master addresses some of the key challenges of the future of industry, including **Artificial Intelligence, robotics, big data, and cybersecurity**, and offers a learning path focused on hands-on experimentation through project work and activities on the BI-REX digital factory pilot line.

Through this collaboration, Wyde aims to contribute to the **development of the skills needed to navigate the digital transition**, promoting upskilling and reskilling pathways that support professionals and organizations in addressing one of the most profound transformations shaping the world of work.



Two days of work with THNK School of Leadership

In November, we organized a **Faculty Meeting** in Milan dedicated to the Wyde community, held in collaboration with **THNK School of Leadership**, one of the leading international schools specializing in transformational leadership development.



For the first time, THNK was hosted in Italy for a gathering designed as a space for exploration and dialogue among members of the Wyde faculty. Over the two days, we worked on key dimensions of our facilitation approach: quality of presence, self-awareness, and the ability to create spaces of trust within groups.



The first day focused on individual work—energy, intrinsic motivations, and what enables each person to fully express their role as a facilitator. The second day shifted to the collective dimension, exploring what becomes possible when a professional community moves with greater trust, openness, and shared courage.

This meeting represents an investment in strengthening our faculty and in enhancing the quality of the experiences Wyde designs for the organizations it collaborates with.

Teamwork can create value for the community

In December, we facilitated a **solidarity-driven team building experience for the Digital team of Flutter SEA**, designed to combine collaboration, creativity, and social impact.

During the activity, participants assembled **gift boxes for children**, filling them with toys and items intended to bring a moment of joy during the holiday season. The boxes were then donated to two organizations committed to supporting local communities and vulnerable individuals: **Cometa and Associazione Qiqajon**.

Through initiatives like this, Wyde continues to promote team building experiences that go beyond strengthening collaboration among colleagues, generating a **tangible impact on local communities and the surrounding area**.



One tree for every course delivered

At the end of 2025, we chose to measure the impact of the training activities carried out throughout the year and connect it to **a concrete environmental offset action.**

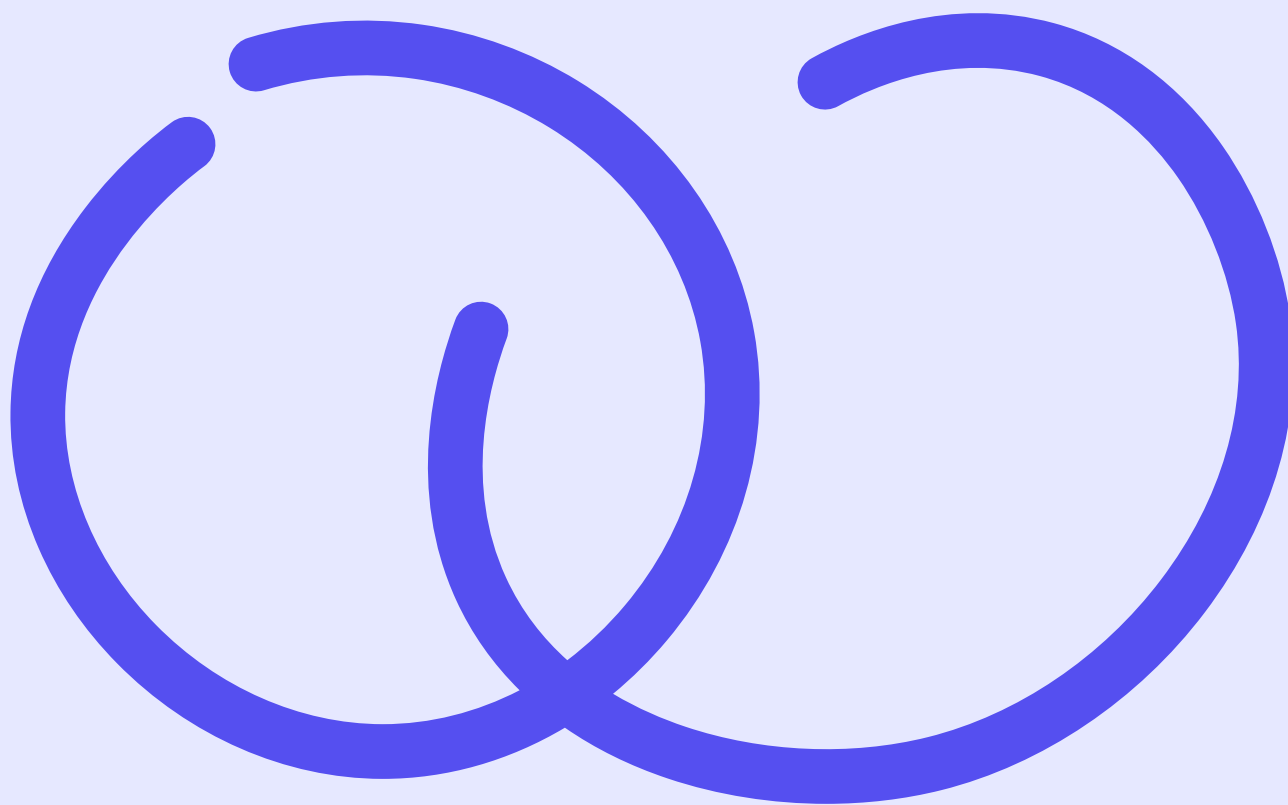


For every course delivered by Wyde during the year, we decided to **plant a tree through the international project One Tree Planted.**

In 2025, Wyde delivered **588 courses**, turning this commitment into **600 new trees planted** in support of reforestation projects. This gesture represents our way of linking the growth of people and teams, the core of our work, to the care of ecosystems and our responsibility toward the planet.

Our impact and offsetting projects

04



To better understand and reduce our environmental impact, we have initiated a structured process to **measure greenhouse gas (GHG) emissions**, following the criteria of the **Greenhouse Gas Protocol**, the most widely used international standard for climate reporting.



Emissions are analyzed across three categories, [Scope 1](#), [Scope 2](#), and [Scope 3](#), which distinguish between direct and indirect emissions generated by our activities.

This classification allows us to more clearly identify where our impact is concentrated and to guide reduction actions across our entire value chain.

These include **emissions generated from sources under the company's direct control**, such as fuel consumption for office heating or the use of company vehicles. Monitoring these emissions allows us to identify opportunities for energy efficiency and consumption reduction.

**TOTAL
EMISSIONS**

2,87 TON
CO₂ EQ.





SCOPE 2 → PURCHASED ENERGY

These refer to **indirect emissions associated with the production of the electricity** purchased and consumed by the company. Analyzing energy consumption helps us improve operational efficiency and progressively increase the use of energy from renewable sources.

**TOTAL
EMISSIONS**

LOCATION BASED

0,58 TON
CO₂ eq.

**TOTAL
EMISSIONS**

MARKET BASED

1,03 TON
CO₂ eq.

These include **indirect emissions generated by work-related travel**, such as air, rail, or car journeys. Although indirect, they represent a significant component of our impact. For this reason, we promote more sustainable mobility policies and the use of digital tools to reduce the need for travel.

**TOTAL
EMISSIONS**

13,249 TON
CO₂ eq.



Emissions offsetting

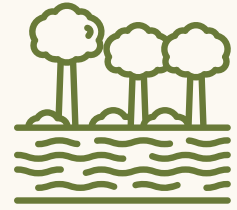
After calculating the emissions generated by our activities in 2025, we launched **a series of climate offsetting projects**, which enabled us to offset **4 tons of CO₂** through internationally certified initiatives.



The supported projects contribute to the protection of natural ecosystems, the conservation of biodiversity, and the development of local communities.

INDONESIA

Katingan Peatland Restoration and Conservation Project



This project protects over **150,000 hectares of peatland forest**, one of the most effective ecosystems for carbon capture.

THE PROJECT IN 3 KEY POINTS

Protection of high carbon sequestration ecosystems **01**

Biodiversity conservation **02**

Economic development of local communities **03**

Peatlands can store greater amounts of CO₂ than traditional forests and provide essential habitats for numerous endangered species, including orangutans and tigers.

In addition to environmental protection, the project actively involves local communities by creating job opportunities and supporting social initiatives in the area.



AMAZONIA

Envira Amazonia Project



Located in the Amazon region of the state of Acre, this project contributes to the protection of **200,000 hectares of rainforest**, one of the most important ecosystems for global climate balance.

THE PROJECT IN 3 KEY POINTS

Protection of the Amazon rainforest 01

Prevention of deforestation 02

Support for local communities 03

The initiative focuses on preventing deforestation and wildfires, safeguarding a habitat that is home to millions of animal and plant species. The project also generates social benefits for local communities by creating job opportunities and improving access to essential services such as education and healthcare infrastructure.



URUGUAY

Guanaré Forest Plantation Project



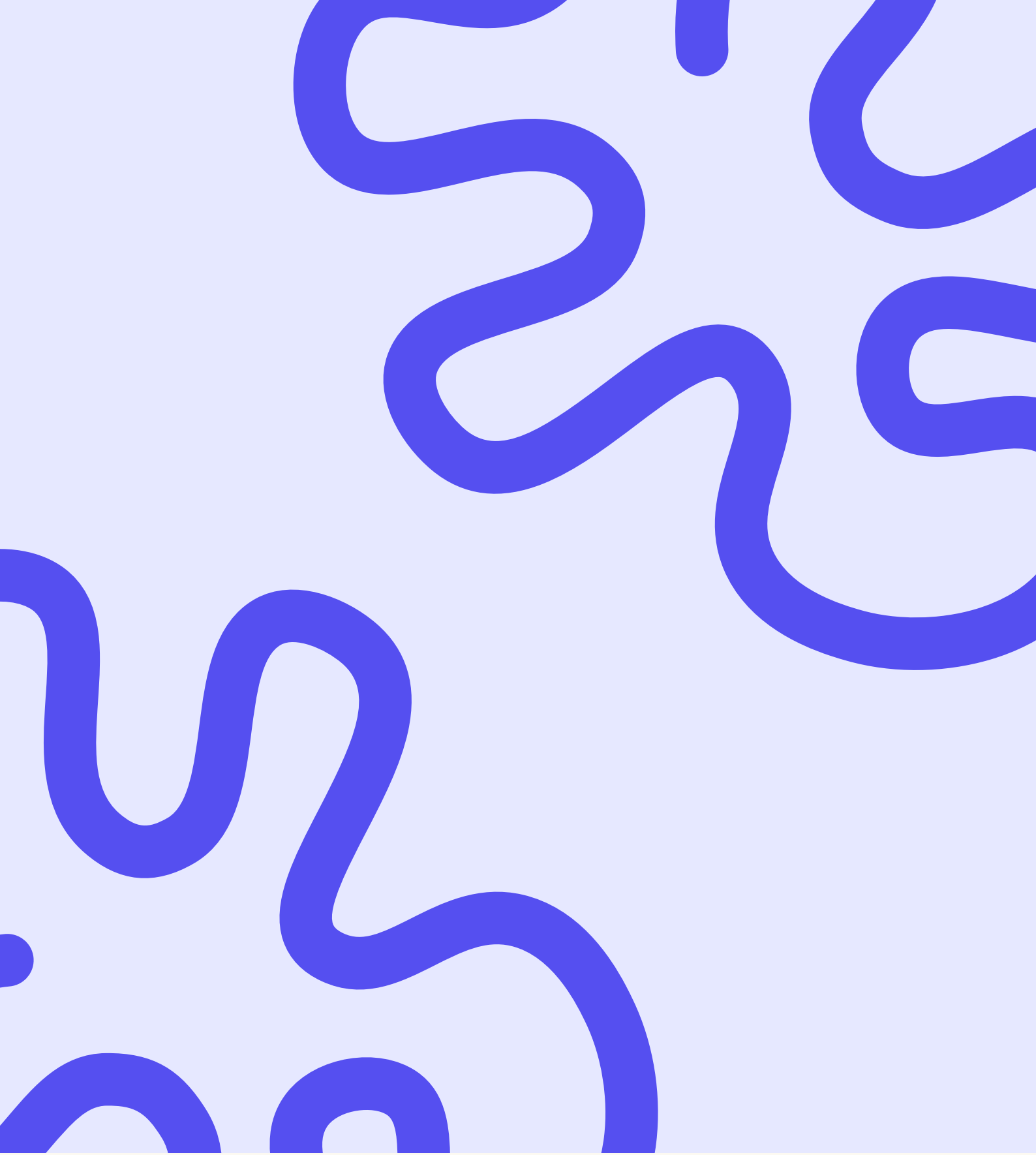
This project supports the **reforestation of degraded grasslands** in the north-central region of Uruguay, contributing to the restoration of natural ecosystems and carbon capture.

THE PROJECT IN 3 KEY POINTS

Reforestation and CO ₂ capture	01
Biodiversity conservation	02
Environmental education and community engagement	03

Activities include biodiversity monitoring, educational programs for schools, and community engagement initiatives aimed at promoting environmental stewardship and the protection of native wildlife.





**Goals
for 2026**

CREATIVITY AS A STRATEGIC PRESENCE

We operate in a liminal space, where creativity moves beyond being an individual talent and becomes an **essential organizational capability**.

For us, it has always meant the ability to generate new possibilities when familiar solutions are no longer sufficient.

In 2026, we aim to bring this idea to the core of our work: helping leaders and organizations develop a **creative presence**, a quality of listening, imagination, and courage that enables them to reframe problems before solving them and to make responsible decisions even when the future is not yet fully visible.

01

ARTIFICIAL INTELLIGENCE AND DIGITAL TRANSFORMATION

Artificial intelligence and digital technologies are profoundly transforming the way we work, learn, and make decisions.

In 2026, we aim to contribute to this transition by helping organizations **develop the skills, awareness, and critical thinking needed to use AI effectively**, not only as a technological tool, but as a driver of cultural and organizational change.

Through **upskilling and reskilling** pathways, we will support leaders and teams in integrating new technologies while keeping at the center what makes work human: responsibility, imagination, and the ability to build meaningful relationships.

02

ROOTING OURSELVES IN THE WORLD

Mumbai, Monterey, Beijing, Johannesburg, and Toronto were only the beginning of a map we intend to keep drawing.

03

In 2026, we will strengthen our international presence by building lasting relationships with partners and communities that share the same desire for cultural transformation. Because organizational change has no boundaries, and neither can our work.


CARING FOR THOSE WHO CARE

Well-being in organizations is not a benefit; it is a necessary condition for thinking well, collaborating effectively, and creating meaningfully.

04

In 2026, we aim to continue placing care at the center of our work, not as a topic to address, but as a way of being: in relationships, in learning journeys, and in the organizational contexts we engage with.

We believe that organizations capable of caring for people are those that generate lasting change.



STRENGTHENING OUR COMMITMENT TO DIVERSITY, EQUITY & INCLUSION

At a time when many rights are being called into question, choosing **Diversity, Equity & Inclusion** is not a market position, it is a matter of responsibility.

05


In 2026, we will continue to strengthen our commitment to these topics by developing **strategies, learning journeys, and spaces for dialogue** that help organizations build more equitable, open, and inclusive environments.

CO-CREATING AS A SHARED RESPONSIBILITY

For Wyde, co-creation does not simply mean participation. **It means sharing responsibility for thinking and decision-making.** It is a posture even before it is a method, the way we hold space, frame questions, and support organizations through change.

06

In 2026, we aim to make this approach even more recognizable across our client engagements and within the platform we are building. Because organizations that learn to think together are also those best equipped to act effectively when answers are not yet clear.





**Final
Notes**

06

This third Impact Report represents a further step in our **journey toward an increasingly concrete and integrated approach to sustainability.**

Over the course of the year, we have continued to strengthen our commitment through measurable actions and initiatives that bring together the **environmental, social, and cultural dimensions** of our work.

We placed particular focus on the values of **Diversity, Equity & Inclusion (DEI)**, strengthening existing projects and promoting initiatives that support organizational well-being and the growth of people within organizations.

Alongside this commitment, throughout the year we **launched new projects focused on digital transformation and artificial intelligence**, with the aim of supporting leaders and teams in developing the skills needed to navigate technological change.

We continue to develop solutions oriented toward a responsible and prosperous future, aligning our values with the demands of **environmental, social, and technological sustainability**.



CONTACTS
community@wyde.it

W'YDE